

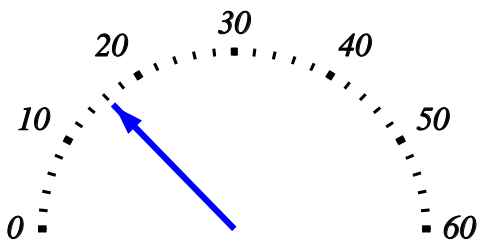
Reading from a scale using multiplication

| | | |
|-------|--------|-------|
| Name: | Class: | Date: |
|-------|--------|-------|

| | | |
|------|------|---|
| Mark | / 10 | % |
|------|------|---|

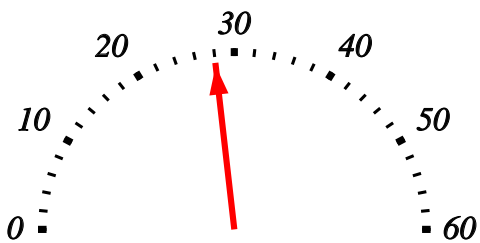
1) Read the number shown on the scale

[1]



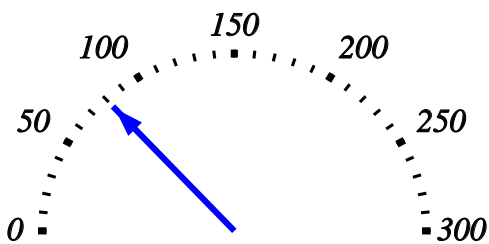
2) Read the number shown on the scale

[1]



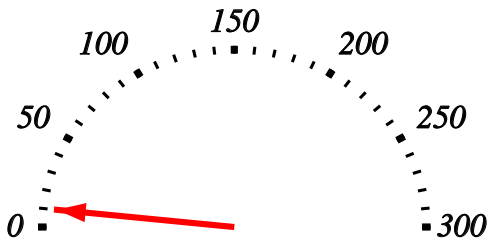
3) Read the number shown on the scale

[1]



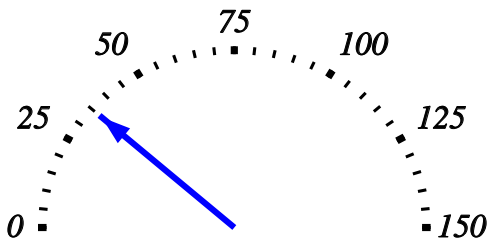
4) Read the number shown on the scale

[1]



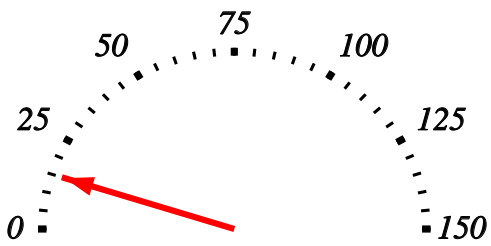
5) Read the number shown on the scale

[1]



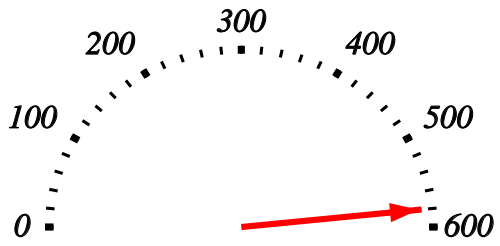
6) Read the number shown on the scale

[1]



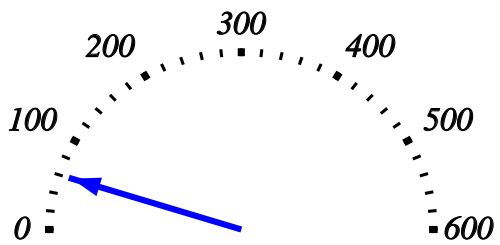
7) Read the number shown on the scale

[1]



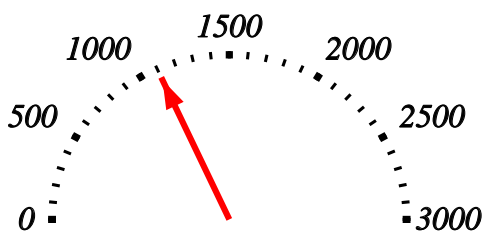
8) Read the number shown on the scale

[1]



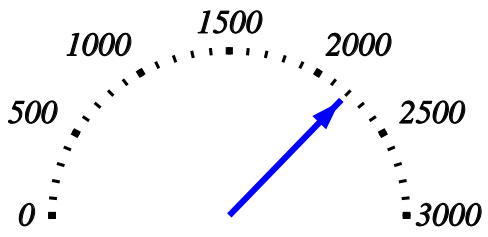
9) Read the number shown on the scale

[1]



10) Read the number shown on the scale

[1]



Solutions for the assessment Reading from a scale using multiplication

1) 16

2) 28

3) 80

4) 10

5) 35

6) 15

7) 580

8) 60

9) 1100

10) 2200