

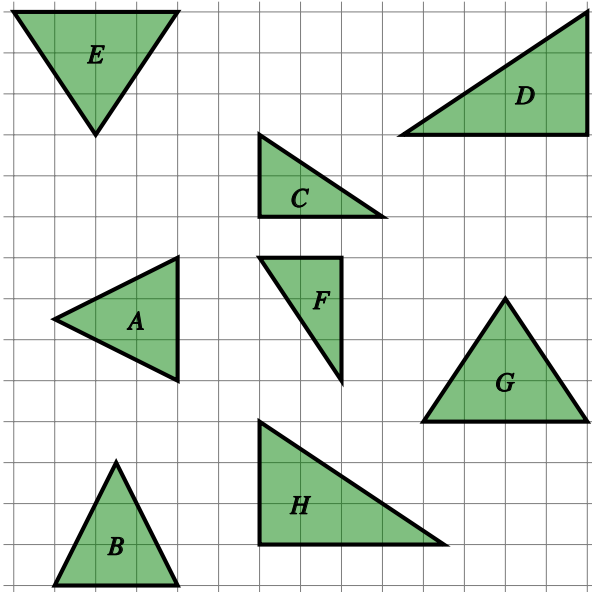
Turning and movement

Name: _____ Class: _____ Date: _____

Mark / 8 %

1) Identify the pairs of congruent shapes in the grid below

[1]

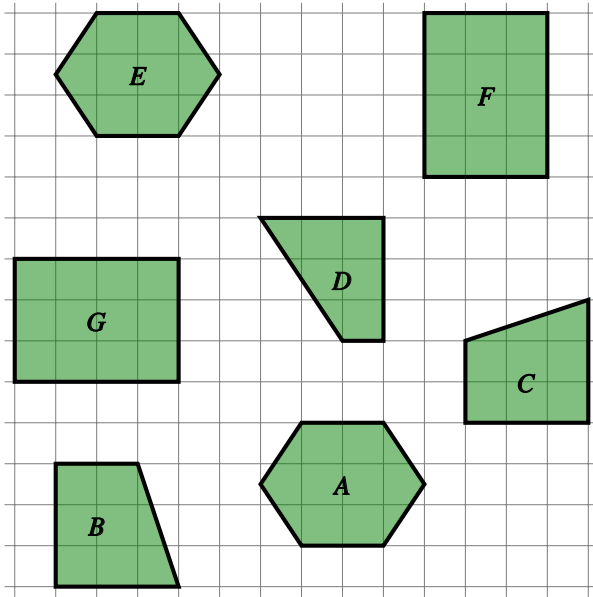


B and F and

E and D and

2) One of the shapes in the grid does not have a matching pair. Which one is it?

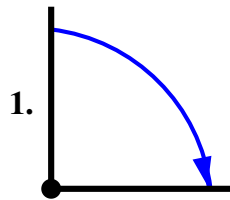
[1]



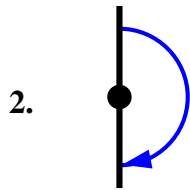
Shape =

3) Match the pictures with the words

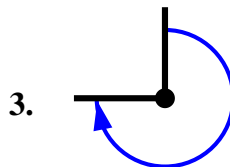
[1]



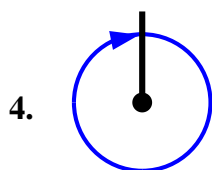
A. three-quarter turn



B. half turn



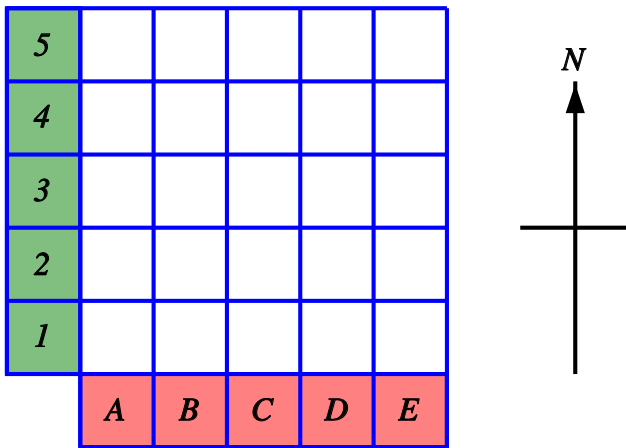
C. full turn



D. quarter turn

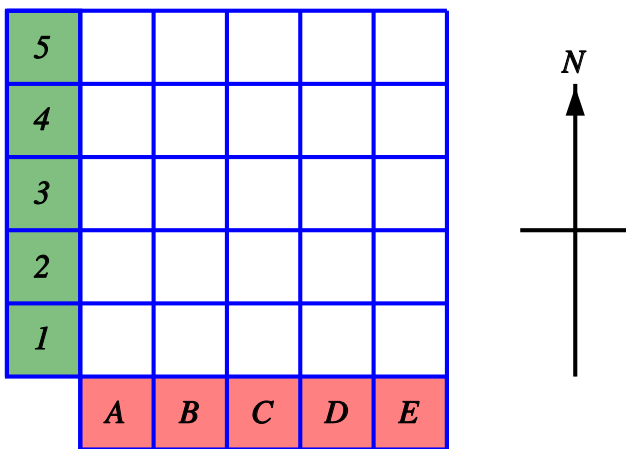
4) Start at C2 on the grid. Go North 3 squares and then West 2 squares.

[1]



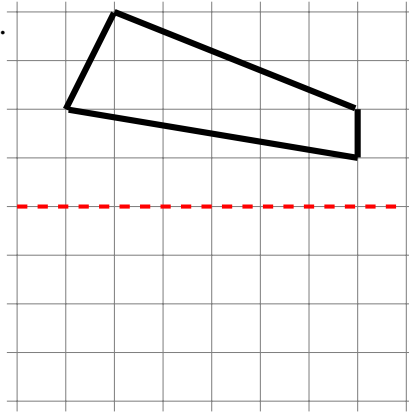
Write the position of the square you are now in.

5) Start at C2 facing North, go forward 2 squares, then turn 90° anticlockwise and go forward 1 square. [1]



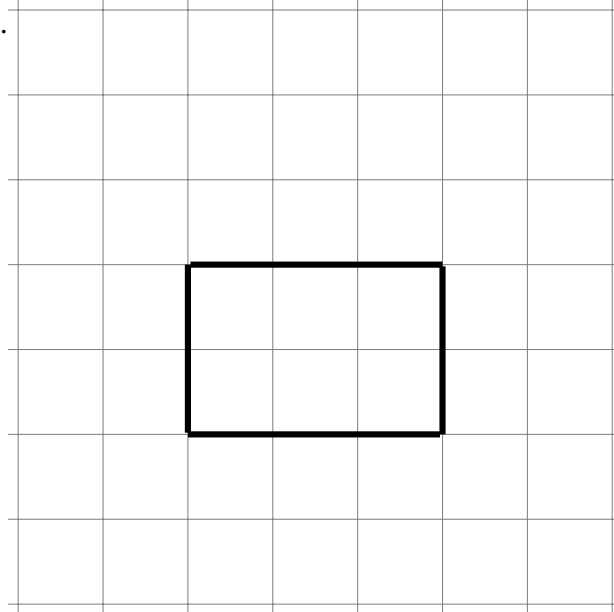
Write the position of the square you are now in.

6) Reflect the shape in the dotted mirror line.



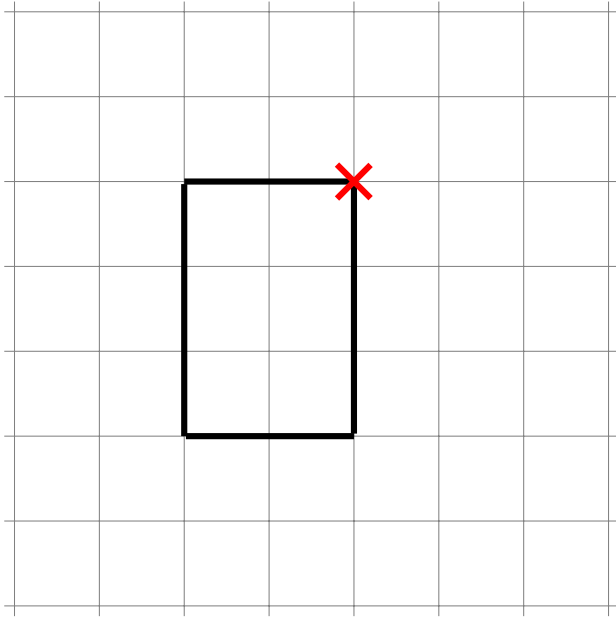
[1]

7) Translate the shape 2 boxes to the left .



[1]

8) Rotate the shape 90° clockwise about the centre marked with a cross.



[1]

Solutions for the assessment Turning and movement

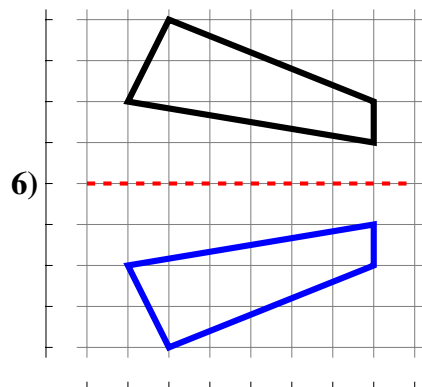
1) B and A, F and C, E and G, D and H

2) D

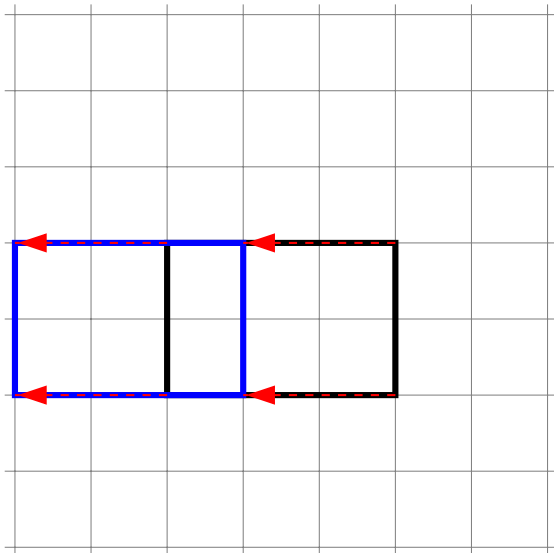
3) 1 D, 2 B, 3 A, 4 C

4) A5

5) B4



7)



8)

